

gusella-bakker.com

SHZ



Ton. 0,7 - 2,1

SCRAP
ROTTAME
RUBBLE
MACERIE
WASTE MATERIAL
RIFIUTI




SpiderKing

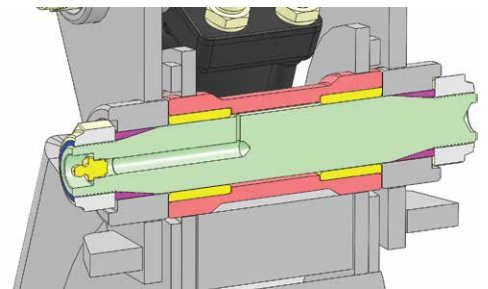

OMEGALINE



Conic Pins
Perni Conici

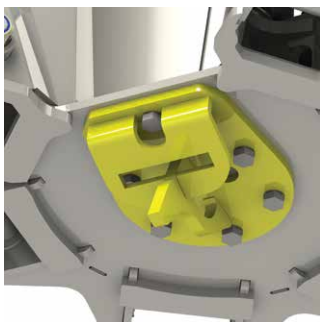
The first and only orange peel grapple available with conic pins for loader cranes!

La prima e unica benna a polipo per autocarri ad avere i perni conici!



This system allows an easy elimination of play between pin and bushing caused by wear by tightening the nuts of the pin.

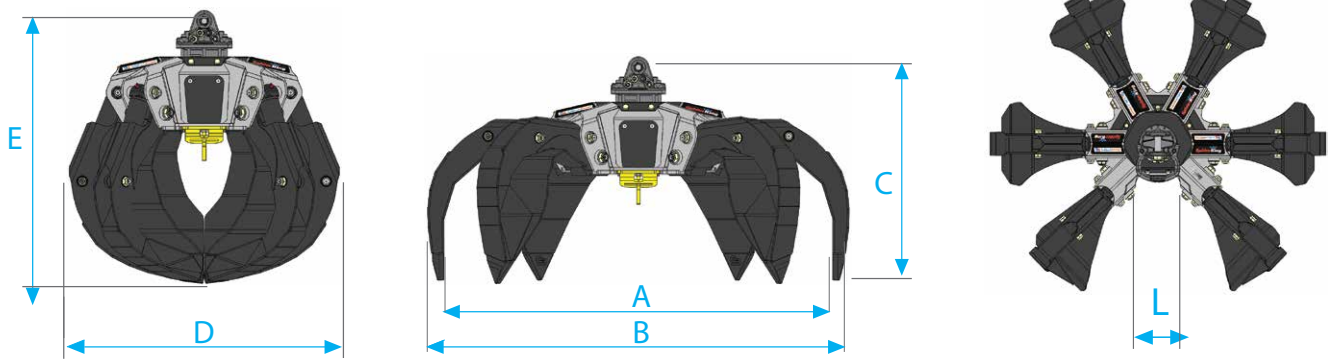
Grazie a questo sistema i giochi causati dall'usura tra perno e boccia vengono compensati semplicemente serrando i dadi del perno.



Safety hook
Gancio di sicurezza

Gusella-Bakker offers a new patented system of removable and adjustable clamps. Because of that the orange peel grapple can be customized to almost any loader crane.


La Gusella Bakker ha sviluppato e brevettato un innovativo sistema di ganci smontabili e personalizzabili per adattare la benna a polipo su qualsiasi gru.



Type of link
Attacchi disponibili



| Model Modello | Link type Tipo attacco | Capacity Capacità | | Load Portata | Pressure Pressione | Teeth Pale | Truck icon | Dimensions Dimensioni | | | | | |
|------------------|---------------------------|----------------------|-----|-----------------|-----------------------|---------------|------------|--------------------------|------|-----|------|------|-----|
| | | Lt. | Kg. | | | | | A | B | C | D | E | L |
| SHZ 204 | PE | 200 | 298 | 2 | 320 | 4 | 0,7 | 1430 | 1550 | 560 | 1050 | 675 | 250 |
| SHZ 204 | K (6 Ton.) | 200 | 344 | 2 | 320 | 4 | 0,7 | 1430 | 1550 | 860 | 1050 | 975 | 260 |
| SHZ 255 | PE | 250 | 360 | 2,5 | 320 | 5 | 0,7-1,5 | 1440 | 1560 | 570 | 1060 | 680 | 260 |
| SHZ 255 | K (6 Ton.) | 250 | 404 | 2,5 | 320 | 5 | 0,7-1,5 | 1440 | 1560 | 870 | 1060 | 980 | 260 |
| SHZ 255 | K1(12 Ton.) | 250 | 418 | 2,5 | 320 | 5 | 0,7-1,5 | 1440 | 1560 | 903 | 1060 | 1013 | 260 |
| SHZ 255 | K2 (G 131) | 250 | 418 | 2,5 | 320 | 5 | 0,7-1,5 | 1440 | 1560 | 903 | 1060 | 1013 | 260 |
| SHZ 256 | PE | 250 | 399 | 2,5 | 320 | 6 | 0,7-1,5 | 1440 | 1560 | 570 | 1060 | 680 | 250 |
| SHZ 256 | K (6 Ton.) | 250 | 443 | 2,5 | 320 | 6 | 0,7-1,5 | 1440 | 1560 | 870 | 1060 | 980 | 250 |
| SHZ 256 | K1(12 Ton.) | 250 | 457 | 2,5 | 320 | 6 | 0,7-1,5 | 1440 | 1560 | 903 | 1060 | 1013 | 250 |
| SHZ 256 | K2 (G 131) | 250 | 457 | 2,5 | 320 | 6 | 0,7-1,5 | 1440 | 1560 | 903 | 1060 | 1013 | 250 |
| SHZ 304 | PE | 300 | 351 | 2,5 | 320 | 4 | 0,9-1,8 | 1660 | 1800 | 612 | 1130 | 800 | 240 |
| SHZ 304 | K (6 Ton.) | 300 | 397 | 2,5 | 320 | 4 | 0,9-1,8 | 1665 | 1800 | 912 | 1130 | 1110 | 240 |
| SHZ 304 | K1(12 Ton.) | 300 | 408 | 2,5 | 320 | 4 | 0,9-1,8 | 1660 | 1800 | 945 | 1130 | 1143 | 240 |
| SHZ 304 | K2 (G 131) | 300 | 409 | 2,5 | 320 | 4 | 0,9-1,8 | 1660 | 1800 | 945 | 1130 | 1143 | 240 |
| SHZ 305 | PE | 300 | 414 | 3 | 320 | 5 | 1-2 | 1660 | 1800 | 612 | 1130 | 800 | 260 |
| SHZ 305 | K (6 Ton.) | 300 | 458 | 3 | 320 | 5 | 1-2 | 1660 | 1800 | 912 | 1130 | 1110 | 260 |
| SHZ 305 | K1(12 Ton.) | 300 | 472 | 3 | 320 | 5 | 1-2 | 1660 | 1800 | 945 | 1130 | 1143 | 260 |
| SHZ 305 | K2 (G 131) | 300 | 471 | 3 | 320 | 5 | 1-2 | 1660 | 1800 | 945 | 1130 | 1143 | 260 |
| SHZ 306 | PE | 300 | 470 | 3 | 320 | 6 | 1-2 | 1660 | 1800 | 612 | 1130 | 800 | 260 |
| SHZ 306 | K (6 Ton.) | 300 | 516 | 3 | 320 | 6 | 1-2 | 1660 | 1800 | 912 | 1130 | 1110 | 260 |
| SHZ 306 | K1(12 Ton.) | 300 | 527 | 3 | 320 | 6 | 1-2 | 1660 | 1800 | 945 | 1130 | 1143 | 260 |
| SHZ 306 | K2 (G 131) | 300 | 528 | 3 | 320 | 6 | 1-2 | 1660 | 1800 | 945 | 1130 | 1143 | 260 |

 Crane capacity refers to crane boom at its maximal extension. This data are indicative. To choose the correct attachment check also crane lift capacities.
La portata della gru si intende con il braccio tutto sfilato. Questo dato è puramente indicativo, per abbinare la giusta attrezzatura, è necessario consultare il diagramma delle portate della gru.

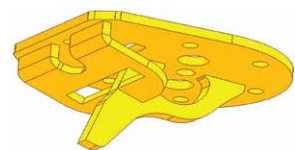
OPTIONS
ACCESSORI



Check valve
Valvola di blocco semplice effetto



Crane link (AG 60 - AG 100)
Staffa basculante per gru (AG 60 - AG 100)



Bolted hook
Gancio inferiore



10041 Carignano (To) Italy
Via Cagliero, 17
Tel. +39 011 9692684

info@gusella-bakker.com

6662 NG Elst (Gld) Netherlands
Nijverheidsweg 6
Tel. +31 (0)481-374757